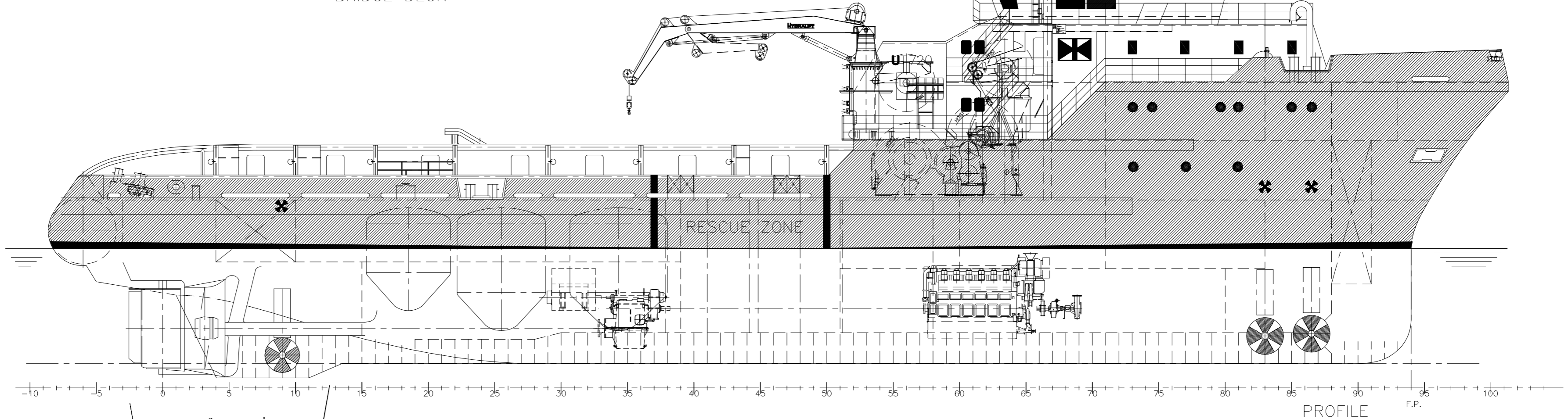
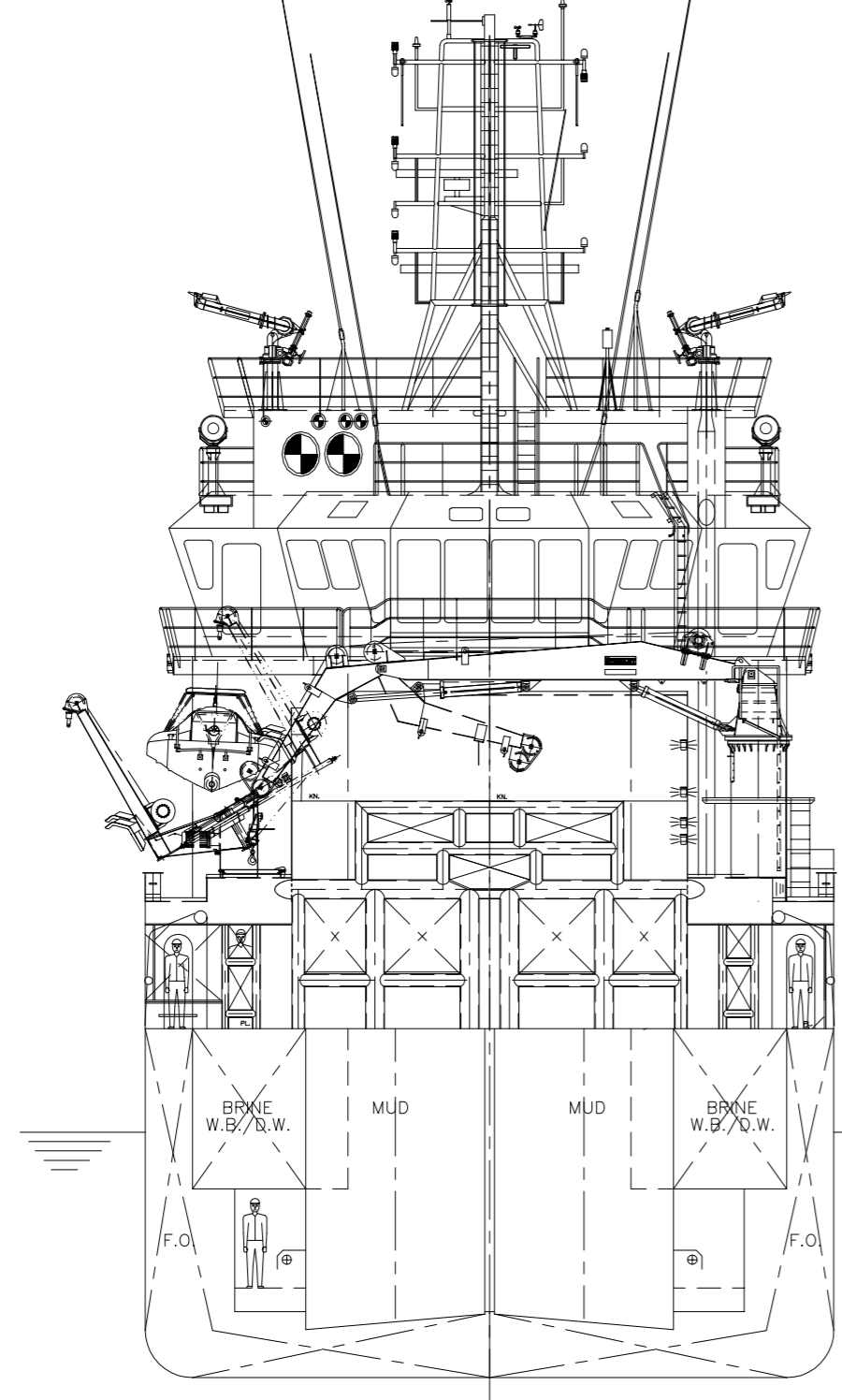


BRIDGE DECK

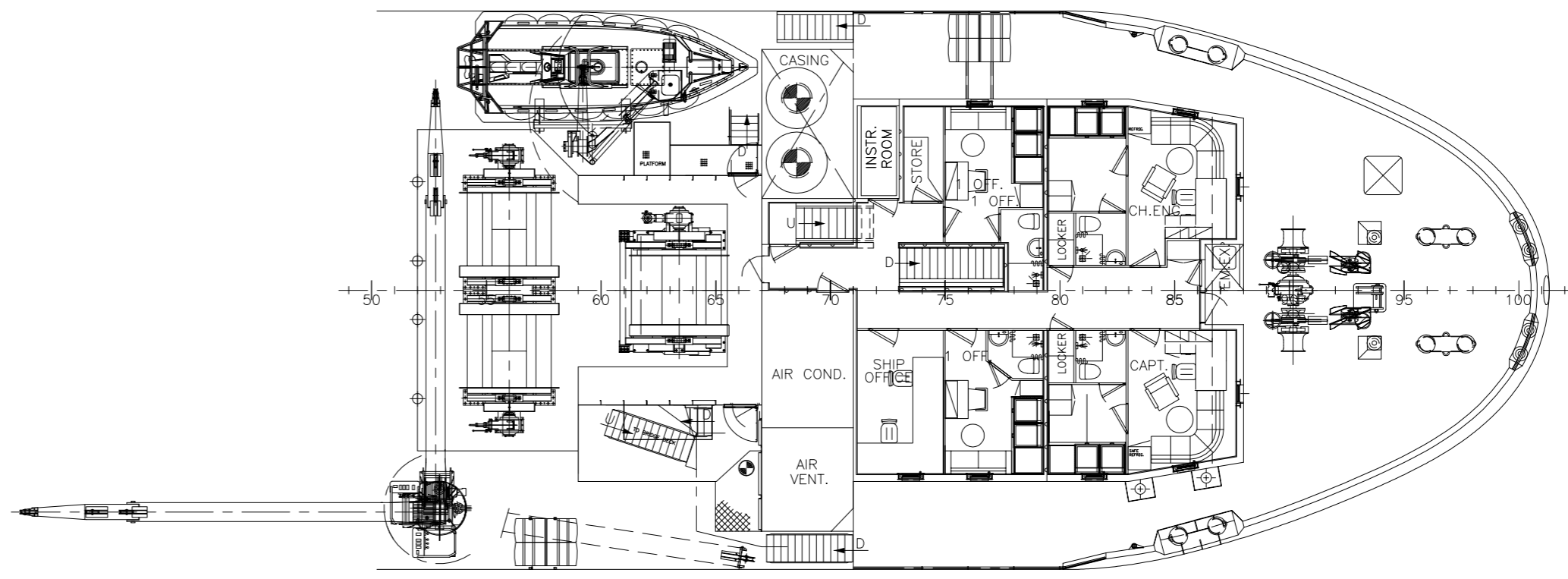
PRINCIPAL DIMENSIONS  
 L.O.A.....Approx. 66.00 m  
 L.P.P..... 56.40 m  
 B. MLD..... 14.60 m  
 DEPTH M-deck.. Approx. 7.40 m  
 DRAFT max..... Approx. 6.30 m  
 DRAFT design..... Approx. 5.20 m



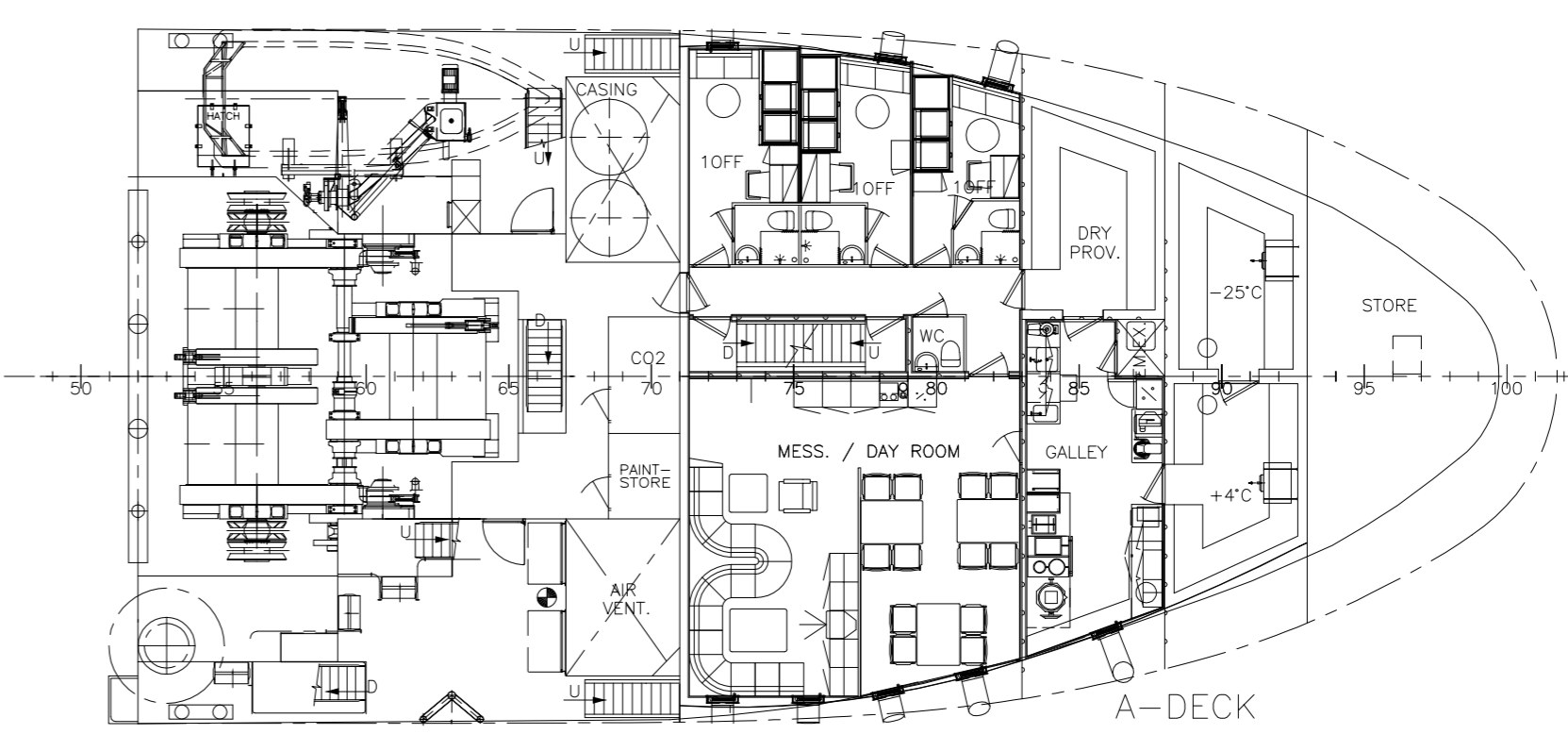
PROFILE



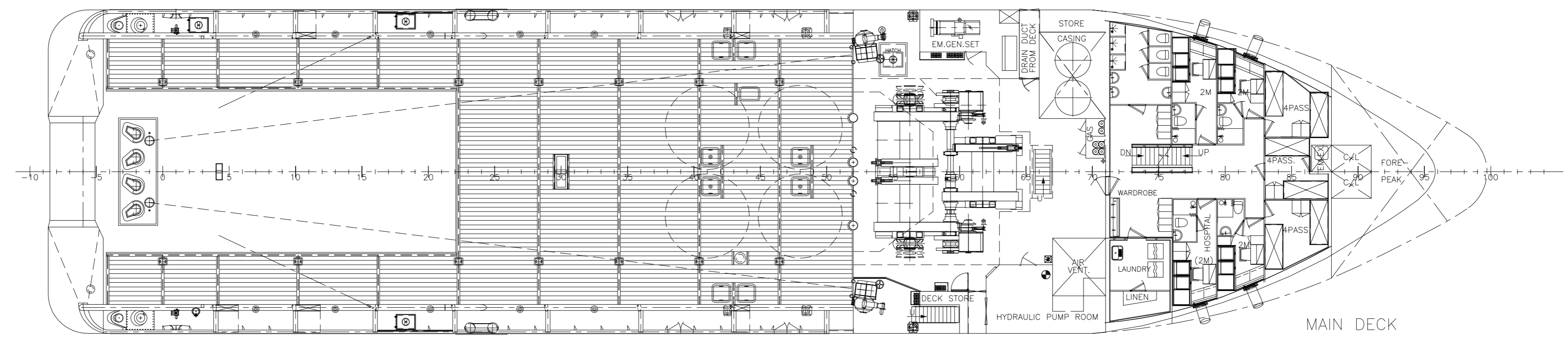
SEEN FROM AFT.



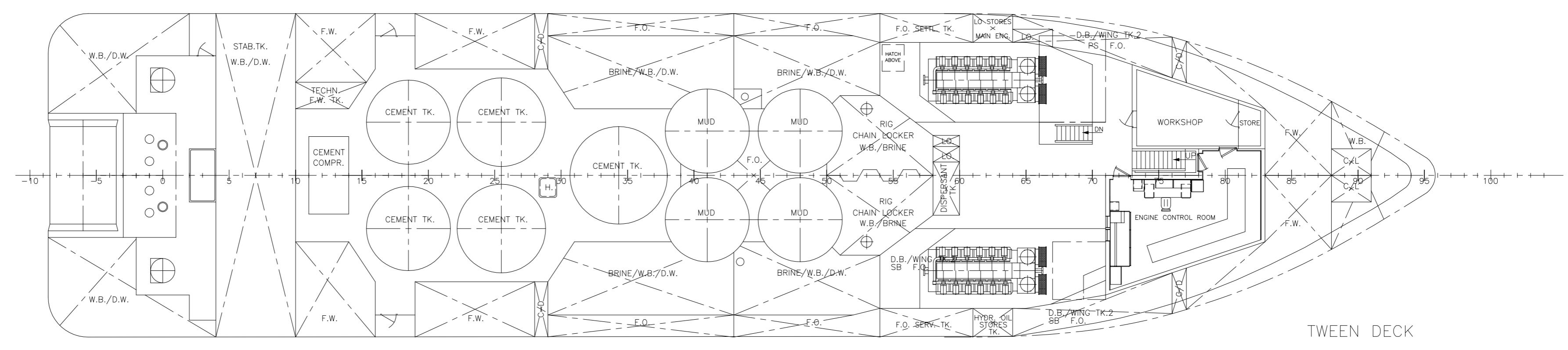
B-DECK



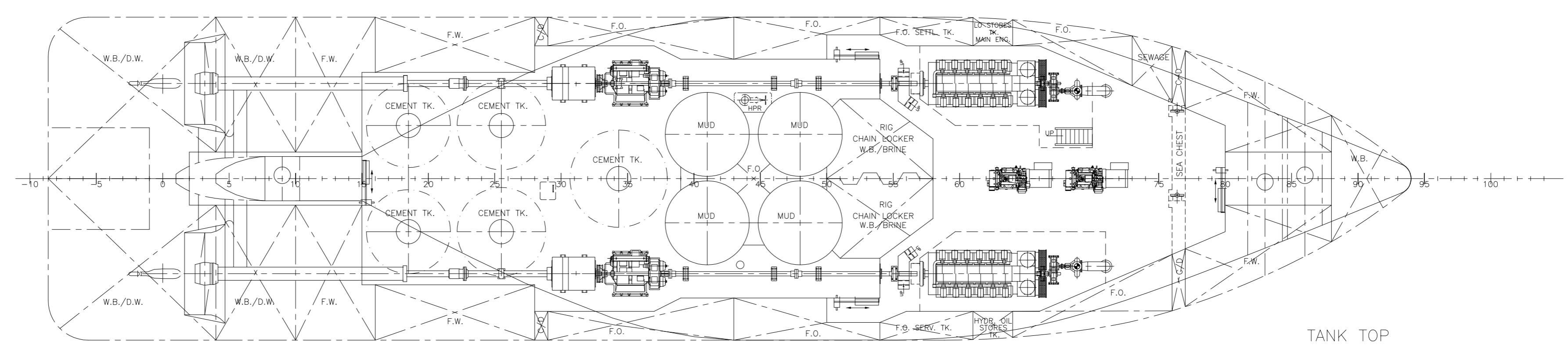
A-DECK



MAIN DECK



TWEEN DECK



TANK TOP

This drawing is a schematic representation of the vessel and is not to be used for construction purposes without the approval of the designer. The vessel is to be built in accordance with the specifications and drawings provided. The vessel is to be built in accordance with the specifications and drawings provided. The vessel is to be built in accordance with the specifications and drawings provided.

REV.	DATE	COPIES	REMARKS
0	18/2/00	2	MARKETING
0	16/11/98	3	MARKETING

**General Arrangement**

UJSTEIN INDUSTRIER AS  
 Sjøveier Industrihus - Kjetten  
 Sjøveier 17, 70 00, Trondheim, N-70 00, NO  
 Telefon: +47 73 50 00 00, Telefax: +47 73 50 00 00  
 Fax: +47 73 50 00 00

AS BUILT: 17.04.97 KMM/BA  
 I/P/DATE: 02.01.97 HCL/BA

Scale: 1:150

Project No: P-0-3346

UJSTEIN INDUSTRIER AS  
 Sjøveier Industrihus - Kjetten  
 Sjøveier 17, 70 00, Trondheim, N-70 00, NO  
 Telefon: +47 73 50 00 00, Telefax: +47 73 50 00 00  
 Fax: +47 73 50 00 00