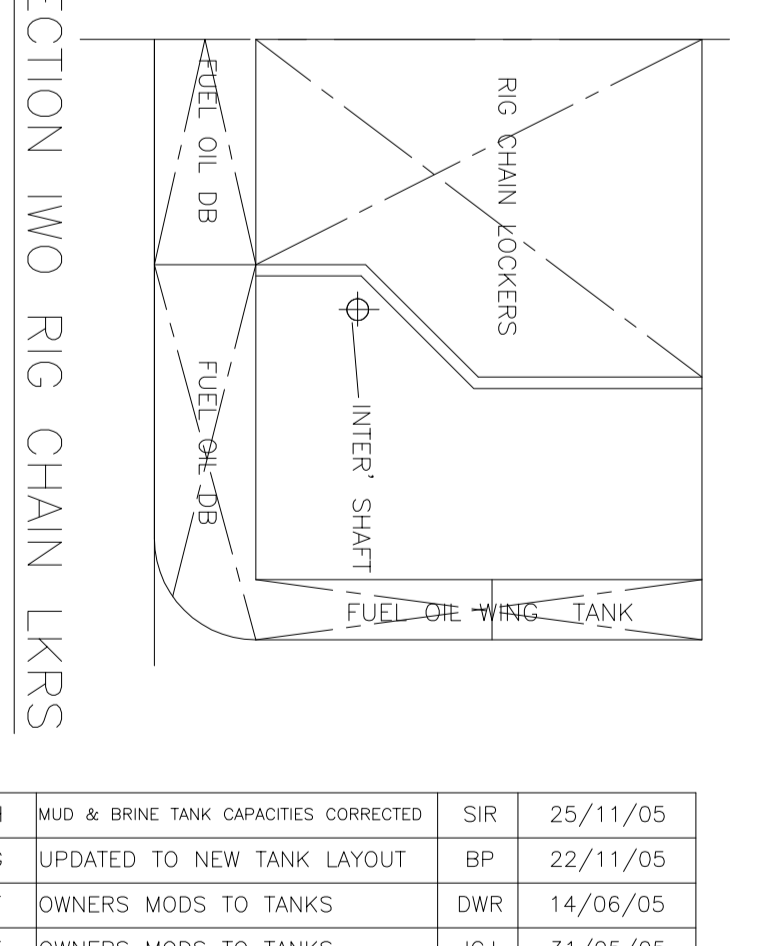
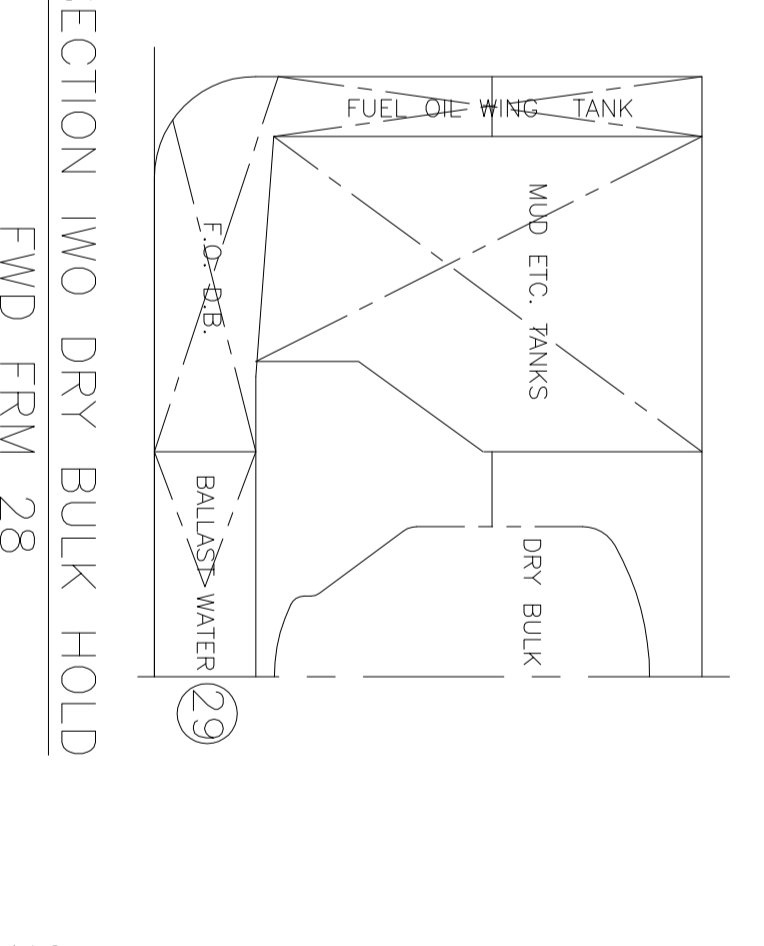
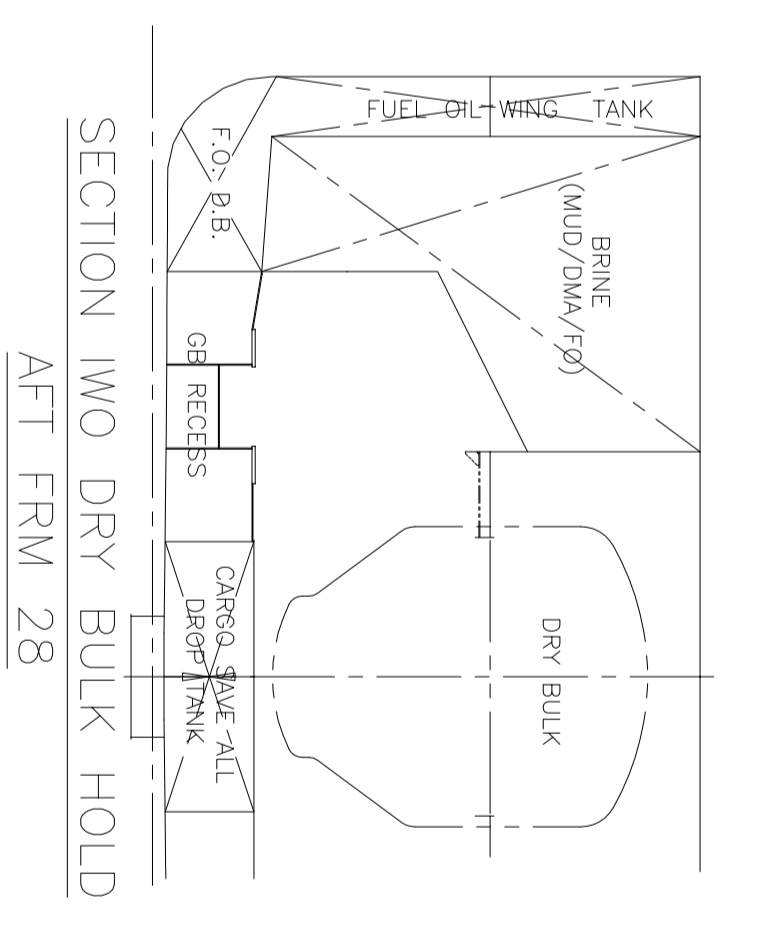
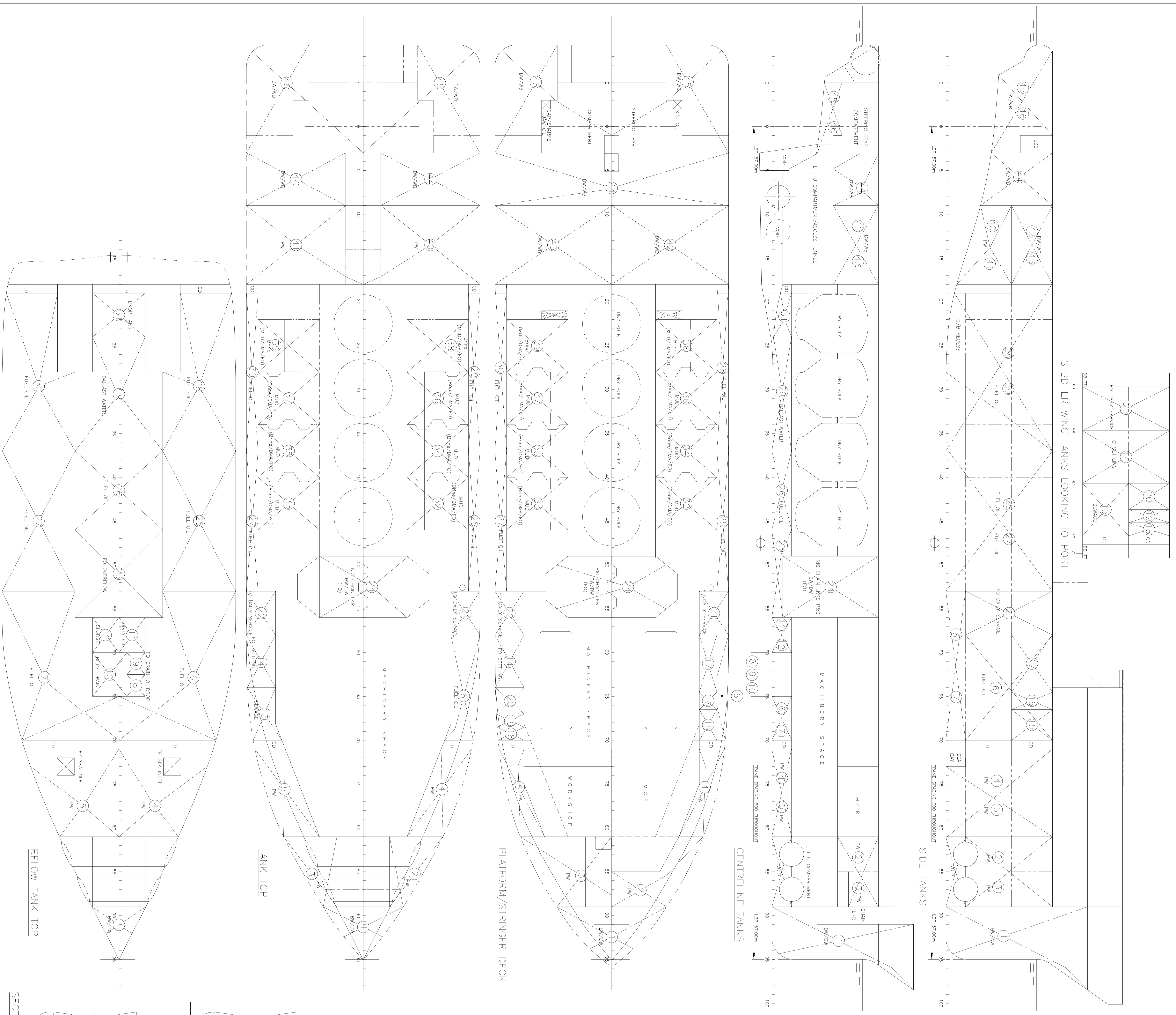


PROVISIONAL TANK CAPACITIES (CUBIC METRES)

TANK No.	FRAMES	DESCRIPTION	CAPACITY	FUEL OIL	POTABLE WATER	DRILL/WATER	MUD	BRINE	DWA	LOG	VCG
1	89-90	FORE PEAK	115.15			115.15				55.19	6.55
2	81-89	DB/WING TK 1 (P)	54.98		54.98					51.01	4.88
3	81-89	DB/WING TK 1 (S)	78.05		78.05					50.66	5.18
4	71-81	DB/WING TK 2 (P)	86.56		86.56					45.57	2.95
5	71-81	DB/WING TK 2 (S)	86.56		86.56					45.57	2.95
6	53-70	DB/WING TK 3 (P)	128.53		128.53					37.57	1.99
7	53-70	DB TK 3 (S)	74.72		74.72					37.11	0.70
8	62.5-66	DB TK - LUBE OIL DROP	2.48		2.48					38.25	0.68
9	60-62.5	DB TK - FO DRAIN	2.48		2.48					36.75	0.68
10	60-65	DB TK - BILGE DRAIN	9.33		9.33					37.50	0.68
11	56-60	DB TK - DIRTY OIL	5.71		5.71					34.80	0.68
12	56-60	DB TK - SLUDGE	5.71		5.71					34.80	0.68
13	64-70	WING TK (S) - SEWAGE	17.91		17.91					40.15	3.04
14	64-70	WING TK (S) - FO SETTLING	41.02		41.02					36.58	4.37
15	66.5-70	WING TK (P) - HYD OIL STORAGE	6.91		6.91					40.95	5.90
16	64.5-66.5	WING TK (P) - HYD OIL DROP TANK	3.95		3.95					39.30	5.90
17	58-64.5	WING TK (P) - M.C.R. & PEN. LKRS. (P)	12.84		12.84					36.75	5.90
18	68.5-70	WING TK (S) - THROUSER L.O. STOR.	4.37		4.37					41.54	5.93
19	67-68.5	WING TK (S) - SPARE OIL	4.61		4.61					40.65	5.91
20	64-67	WING TK (S) - DISPERSANT	9.64		9.64					39.29	5.90
21	53-58	WING TK (P) - FO DAILY SERVICE	34.95		34.95					33.30	4.33
22	53-58	WING TK (S) - FO DAILY SERVICE	34.95		34.95					33.30	4.33
23	46-56	DB TK (C) - FO OVERFLOW	32.81		32.81					30.19	0.51
24	49-56	RIG CHAIN LOCKER (PKS)	195.54		195.54					31.50	4.25
25	37-53	DB/WING TK 4 (P)	106.62		106.62					26.96	2.23
26	37-46	DB TK 4 (C)	42.86		42.86					24.90	0.88
27	37-53	DB/WING TK 4 (S)	106.62		106.62					26.96	2.23
28	19-37	DB/WING TK 5 (P)	111.98		111.98					17.04	2.43
29	24-37	DB TK 5 (C)	54.27		54.27					18.68	0.67
30	19-37	DB/WING TK 5 (S)	111.98		111.98					17.04	2.43
31	19-24	DB TK - DRIP	12.52		12.52					12.99	0.75
32	40-46	MUD TK 1 (P)	77.44	(77.44)						25.80	4.59
33	40-46	MUD TK 1 (S)	77.44	(77.44)						25.80	4.59
34	34-40	MUD TK 2 (P)	77.44	(77.44)						22.20	4.59
35	34-40	MUD TK 2 (S)	77.44	(77.44)						22.20	4.59
36	28-34	MUD TK 3 (P)	77.44	(77.44)						18.60	4.59
37	28-34	MUD TK 3 (S)	77.44	(77.44)						18.60	4.59
38	22-28	BRINE TK 1 (P)	63.80	(63.80)						15.00	4.96
39	22-28	BRINE TK 1 (S)	63.80	(63.80)						15.00	4.96
40	9-18	LOWER DEEP TK 6 (P)	81.04		81.04					8.66	2.91
41	9-18	LOWER DEEP TK 6 (S)	81.04		81.04					8.66	2.91
42	9-18	UPPER DEEP TK 6 (P)	131.22		131.22					8.10	5.75
43	9-18	UPPER DEEP TK 6 (S)	131.22		131.22					8.10	5.75
44	3-9	STAB TK 1	173.34		173.34					3.73	5.63
45	T-3	AFT PEAK (P)	54.99		54.99					-1.94	5.63
46	T-3	AFT PEAK (S)	54.99		54.99					-1.94	5.63
TOTAL VOLUMES			827.05		468.23		127.60				
TOTAL VOLUMES (INCLUDING OPTIONAL TANKS)			(1614.82)		(592.24)		(592.24)		(592.24)		

FOUR DRY BULK CARGO TANKS TOTTALING 185 CUBIC METRES



IMP. MARINE CONSULTANTS LTD.
 1201 BOLLARD PULL AHTS
 SWIRE PACIFIC OFFSHORE

LABORATORY SHIPBUILDING & ENGINEERING Pte Ltd.
 1182-1167 SHELF 1 of 1

TANK & CAPACITY PLAN

DATE: 06/09/05
 SCALE: 1:100 (BA0)