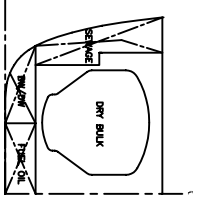
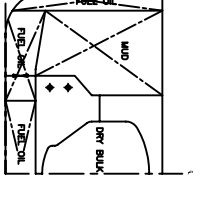
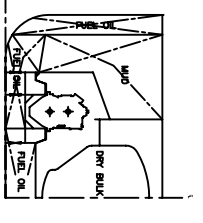
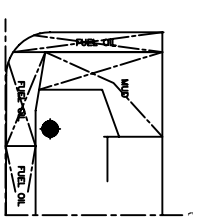
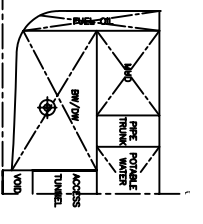
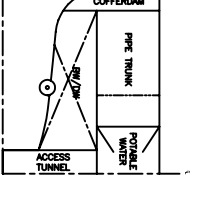
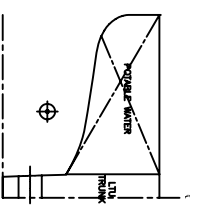
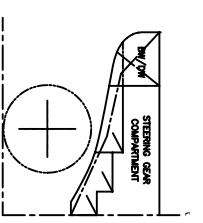


TANK CAPACITIES (m³)

Tank No.	Tank Description	Capacity	Fuel Oil	Potable Water	Water Ballast	Mud	LOG (m)	VCG (m)
01	Fore Peak Water Ballast	33,643					48,857	3,058
02	Potable Water Deep Tank Port	101,793		101,793	33,643		44,177	3,535
03	Potable Water Deep Tank Stbd	98,138		98,138			44,194	3,459
04	Fuel Oil Double Bottom Centre	32,853	32,853				38,700	0,575
05	Sewage Wing Tank Stbd	19,034					37,476	3,661
06	Water Ballast Wing/Double Bottom Port	55,558			55,558		38,946	2,804
07	Water Ballast Wing/Double Bottom Stbd	36,527			36,527		39,712	2,357
08	Fuel Oil Wing/Double Bottom Port	79,509	79,509				32,540	1,787
09	Fuel Oil Wing/Double Bottom Stbd	71,009	71,009				32,996	1,743
10	Dispersant Wing Tank Stbd	9,180					24,000	2,379
11	Lube Oil Wing Tank Stbd	4,595					25,800	2,379
12	Lube Oil Wing Tank Stbd	4,595					27,000	2,379
13	Fuel Oil Drain Tank	5,761					27,300	0,575
14	Fuel Oil Settling Wing Tank Port	22,737	22,737				24,357	3,821
15	Hydraulic Oil Storage Wing Tank Port	9,189					26,400	2,379
16	Main Engine Lube Oil Wing Tank Stbd	9,032					24,000	4,800
17	Fuel Oil Daily Service Tank Port	12,695	12,695				29,099	4,800
18	Fuel Oil Daily Service Tank Stbd	12,695	12,695				29,099	4,800
19	Fuel Oil Double Bottom Port	31,071	31,071				26,432	0,602
20	Fuel Oil Double Bottom Stbd	36,832	36,832				26,568	0,598
21	Dirty Oil / Sludge Double Bottom Centre	11,522					25,500	0,575
22	Bi-ge Holding Double Bottom Centre	11,522					23,700	0,575
23	Mud Tank Port	73,632				73,632	20,100	3,794
24	Mud Tank Stbd	73,632				73,632	20,100	3,794
25	Mud Tank Port	55,638				55,638	14,740	4,148
26	Mud Tank Stbd	55,638				55,638	14,740	4,148
27	Fuel Oil Double Bottom Centre	59,055	59,055				18,105	0,572
28	Fuel Oil Double Bottom Port	45,213	45,213				17,391	0,647
29	Fuel Oil Wing Tank Port	58,697	58,697				15,331	3,441
30	Fuel Oil Wing Tank Stbd	45,213	45,213				17,391	0,647
31	Fuel Oil Double Bottom Stbd	58,697	58,697				15,331	3,441
32	Water Ballast Deep Tank Port	82,988			82,988		9,380	2,208
33	Water Ballast Deep Tank Stbd	82,988			82,988		9,380	2,208
34	Mud Tank Port	36,578				36,578	9,600	4,800
35	Potable Water Deep Tank Port	75,006		75,006			4,073	4,445
36	Potable Water Deep Tank Stbd	75,006		75,006			4,073	4,445
37	Air Peak Water Ballast Tank Port	40,081		40,081			-1,320	4,591
38	Air Peak Water Ballast Tank Stbd	40,081		40,081			-1,320	4,591
39	Mud Tank Stbd	36,578				36,578	9,600	4,800
40	Potable Water Tank Centre	50,803		50,803			9,000	4,800
41	Cargo Slops Tank Double Bottom Centre	6,544					12,617	0,601
42	Bi-ge Settling Wing Tank	6,867					28,500	2,379
Total (m ³)		1768,465	566,286	400,746	371,866	331,696		21,562

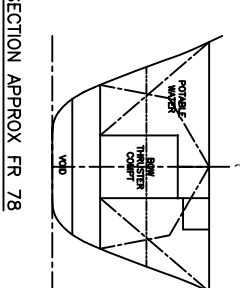
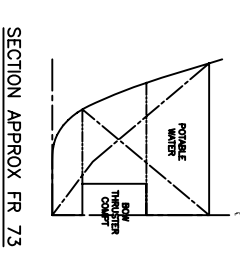
FOUR DRY BULK CARGO TANKS TOTALLING 140 CUBIC METRES

Tank Capacities Calculated Taking into Account a Deduction of 2% For the Allowance of Structure Within the Tank



STATUS
APPROVED WITH REVISIONS

DMT MARINE CONSULTANTS LTD.
MARINE ENGINEERS AND ARCHITECTS



NO.	DATE	DESCRIPTION	BY	CHECKED BY
1	20/07/09	ISSUED FOR APPROVAL		
2	20/07/09	REVISIONS TO BE MADE		
3	20/07/09	ISSUED FOR APPROVAL		
4	20/07/09	REVISIONS TO BE MADE		
5	20/07/09	ISSUED FOR APPROVAL		
6	20/07/09	REVISIONS TO BE MADE		
7	20/07/09	ISSUED FOR APPROVAL		
8	20/07/09	REVISIONS TO BE MADE		
9	20/07/09	ISSUED FOR APPROVAL		
10	20/07/09	REVISIONS TO BE MADE		
11	20/07/09	ISSUED FOR APPROVAL		
12	20/07/09	REVISIONS TO BE MADE		
13	20/07/09	ISSUED FOR APPROVAL		
14	20/07/09	REVISIONS TO BE MADE		
15	20/07/09	ISSUED FOR APPROVAL		
16	20/07/09	REVISIONS TO BE MADE		
17	20/07/09	ISSUED FOR APPROVAL		
18	20/07/09	REVISIONS TO BE MADE		
19	20/07/09	ISSUED FOR APPROVAL		
20	20/07/09	REVISIONS TO BE MADE		
21	20/07/09	ISSUED FOR APPROVAL		
22	20/07/09	REVISIONS TO BE MADE		
23	20/07/09	ISSUED FOR APPROVAL		
24	20/07/09	REVISIONS TO BE MADE		
25	20/07/09	ISSUED FOR APPROVAL		
26	20/07/09	REVISIONS TO BE MADE		
27	20/07/09	ISSUED FOR APPROVAL		
28	20/07/09	REVISIONS TO BE MADE		
29	20/07/09	ISSUED FOR APPROVAL		
30	20/07/09	REVISIONS TO BE MADE		
31	20/07/09	ISSUED FOR APPROVAL		
32	20/07/09	REVISIONS TO BE MADE		
33	20/07/09	ISSUED FOR APPROVAL		
34	20/07/09	REVISIONS TO BE MADE		
35	20/07/09	ISSUED FOR APPROVAL		
36	20/07/09	REVISIONS TO BE MADE		
37	20/07/09	ISSUED FOR APPROVAL		
38	20/07/09	REVISIONS TO BE MADE		
39	20/07/09	ISSUED FOR APPROVAL		
40	20/07/09	REVISIONS TO BE MADE		
41	20/07/09	ISSUED FOR APPROVAL		
42	20/07/09	REVISIONS TO BE MADE		
43	20/07/09	ISSUED FOR APPROVAL		
44	20/07/09	REVISIONS TO BE MADE		
45	20/07/09	ISSUED FOR APPROVAL		
46	20/07/09	REVISIONS TO BE MADE		
47	20/07/09	ISSUED FOR APPROVAL		
48	20/07/09	REVISIONS TO BE MADE		
49	20/07/09	ISSUED FOR APPROVAL		
50	20/07/09	REVISIONS TO BE MADE		
51	20/07/09	ISSUED FOR APPROVAL		
52	20/07/09	REVISIONS TO BE MADE		
53	20/07/09	ISSUED FOR APPROVAL		
54	20/07/09	REVISIONS TO BE MADE		
55	20/07/09	ISSUED FOR APPROVAL		
56	20/07/09	REVISIONS TO BE MADE		
57	20/07/09	ISSUED FOR APPROVAL		
58	20/07/09	REVISIONS TO BE MADE		
59	20/07/09	ISSUED FOR APPROVAL		
60	20/07/09	REVISIONS TO BE MADE		
61	20/07/09	ISSUED FOR APPROVAL		
62	20/07/09	REVISIONS TO BE MADE		
63	20/07/09	ISSUED FOR APPROVAL		
64	20/07/09	REVISIONS TO BE MADE		
65	20/07/09	ISSUED FOR APPROVAL		
66	20/07/09	REVISIONS TO BE MADE		
67	20/07/09	ISSUED FOR APPROVAL		
68	20/07/09	REVISIONS TO BE MADE		
69	20/07/09	ISSUED FOR APPROVAL		
70	20/07/09	REVISIONS TO BE MADE		
71	20/07/09	ISSUED FOR APPROVAL		
72	20/07/09	REVISIONS TO BE MADE		
73	20/07/09	ISSUED FOR APPROVAL		
74	20/07/09	REVISIONS TO BE MADE		
75	20/07/09	ISSUED FOR APPROVAL		
76	20/07/09	REVISIONS TO BE MADE		
77	20/07/09	ISSUED FOR APPROVAL		
78	20/07/09	REVISIONS TO BE MADE		
79	20/07/09	ISSUED FOR APPROVAL		
80	20/07/09	REVISIONS TO BE MADE		
81	20/07/09	ISSUED FOR APPROVAL		
82	20/07/09	REVISIONS TO BE MADE		
83	20/07/09	ISSUED FOR APPROVAL		
84	20/07/09	REVISIONS TO BE MADE		
85	20/07/09	ISSUED FOR APPROVAL		
86	20/07/09	REVISIONS TO BE MADE		
87	20/07/09	ISSUED FOR APPROVAL		
88	20/07/09	REVISIONS TO BE MADE		
89	20/07/09	ISSUED FOR APPROVAL		
90	20/07/09	REVISIONS TO BE MADE		
91	20/07/09	ISSUED FOR APPROVAL		
92	20/07/09	REVISIONS TO BE MADE		
93	20/07/09	ISSUED FOR APPROVAL		
94	20/07/09	REVISIONS TO BE MADE		
95	20/07/09	ISSUED FOR APPROVAL		
96	20/07/09	REVISIONS TO BE MADE		
97	20/07/09	ISSUED FOR APPROVAL		
98	20/07/09	REVISIONS TO BE MADE		
99	20/07/09	ISSUED FOR APPROVAL		
100	20/07/09	REVISIONS TO BE MADE		

DMT MARINE CONSULTANTS LTD.
MARINE ENGINEERS AND ARCHITECTS
100 RIVERSIDE AVENUE, SUITE 100, HOUSTON, TX 77057
TEL: 281-465-1100
FAX: 281-465-1101
WWW.DMTMARINE.COM