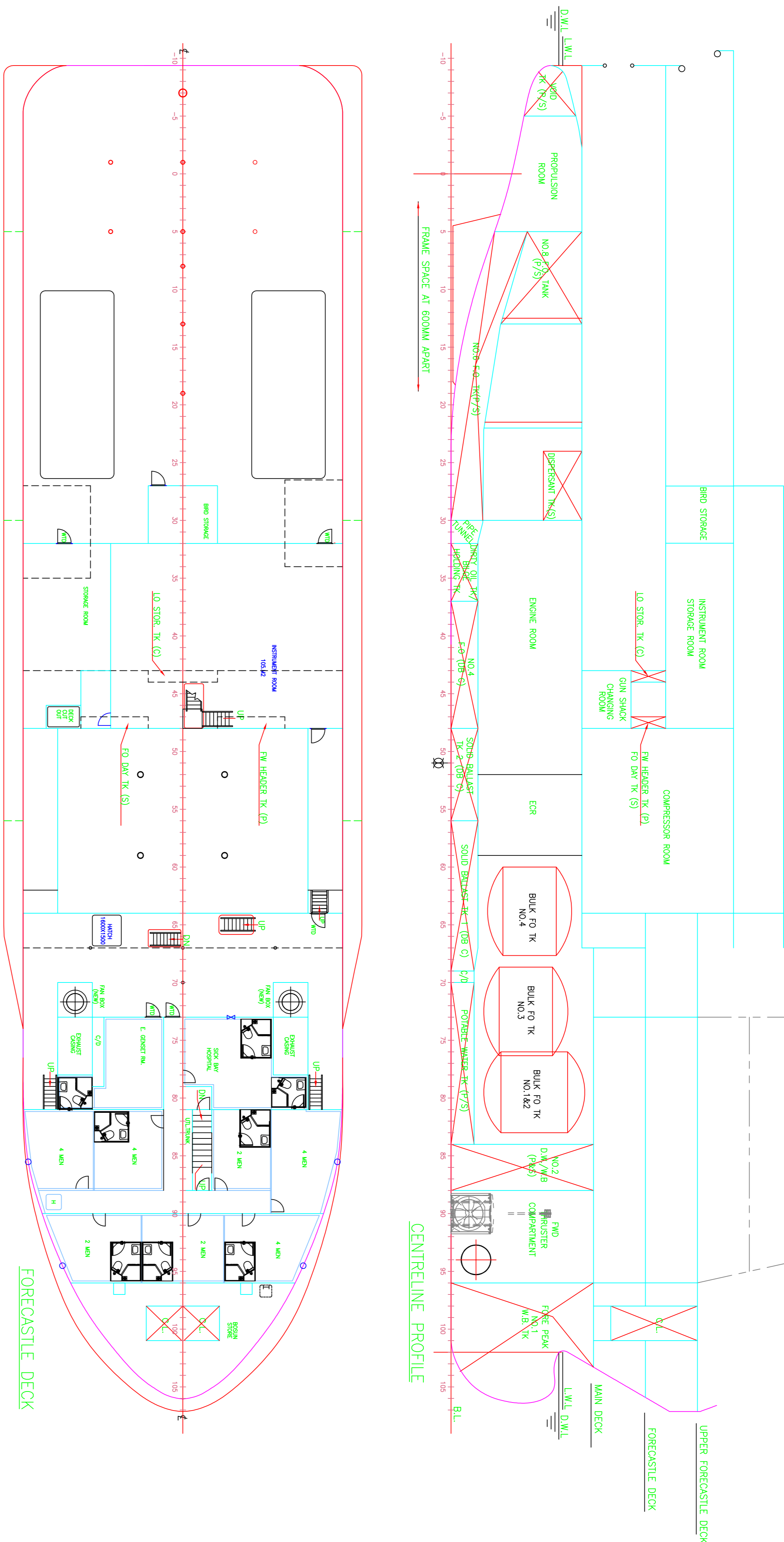
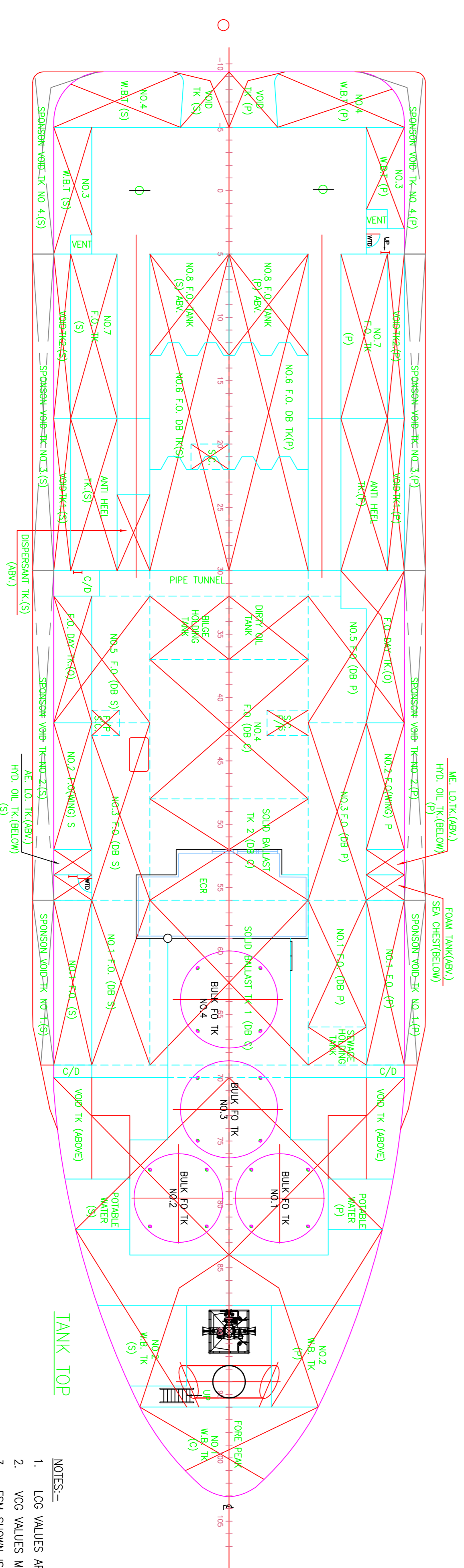


PRINCIPAL PARTICULARS

LENGTH OA 69.90m
 LENGTH BP 61.20m
 BEAM MLD. 18.60m
 DEPTH MLD. 6.80m
 DRAFT DESIGNED 5.80m



CENTRELINE PROFILE



TANK TOP

NOTES:-

- LOG VALUES ARE GIVEN RELATIVE TO FRAME 0
- LOG VALUES MEASURED FROM MOULDED BASELINE
- FSM SHOWN IS THE MAXIMUM MOMENT AT ZERO DEG HEEL AND TRIM

PORTABLE WATER TKS (SG = 1.000)			
LOCATION	VOLUME (M3)	WEIGHT (Tonnes)	LCG (M)
PO WTR TK (P)	FR. 70 - 84	174.14	45.580f
PO WTR TK (S)	FR. 70 - 84	174.14	45.580f
TOTAL	348.28	348.28	45.580f

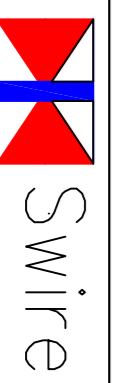
FUEL OIL TKS (SG = 0.870)			
LOCATION	VOLUME (M3)	WEIGHT (Tonnes)	LCG (M)
FO TK (C)	Mtd Bulk Tank	56.68	48.32
NO.1 FO TK (P)	FR. 56 - 69	88.32	37.430f
NO.1 FO TK (S)	FR. 56 - 69	88.32	37.430f
NO.1 FO DRTK (P)	FR. 56 - 69	22.63	5.125p
NO.1 FO DRTK (S)	FR. 56 - 69	22.63	5.125p
NO.2 FO TK (P)	FR. 42 - 52	70.84	69.42
NO.2 FO TK (S)	FR. 42 - 52	70.84	69.42
NO.3 FO TK (P)	FR. 42 - 56	31.69	27.02
NO.3 FO TK (S)	FR. 42 - 56	31.69	27.02
NO.4 FO TK (P)	FR. 30 - 42	68.49	68.49
NO.4 FO TK (S)	FR. 30 - 42	68.49	68.49
NO.5 FO TK (P)	FR. 32 - 42	54.11	53.03
NO.5 FO TK (S)	FR. 32 - 42	54.11	53.03
NO.6 FO TK (P)	FR. 5 - 30	81.59	79.95
NO.6 FO TK (S)	FR. 5 - 30	81.59	79.95
NO.7 FO TK (P)	FR. 5 - 18	67.00	65.66
NO.7 FO TK (S)	FR. 5 - 18	67.00	65.66
NO.8 FO TK (P)	FR. 5 - 13	63.34	62.08
NO.8 FO TK (S)	FR. 5 - 13	63.34	62.08
NO.9 FO TK (P)	FR. 30 - 42	50.90	49.88
NO.9 FO TK (S)	FR. 30 - 42	50.90	49.88
FO DAY TK (S)	FR. 32 - 42	36.34	35.62
COMP FO DAY TK (S)	FR. 47 - 48	4.33	4.25
BULK FO TK NO.1 (P)	FR. 76 - 83	62.00	60.76
BULK FO TK NO.2 (S)	FR. 76 - 83	62.00	60.76
BULK FO TK NO.3 (C)	FR. 69 - 76	61.20	59.98
BULK FO TK NO.4 (C)	FR. 60 - 68	61.20	59.98
TOTAL	1438.53	1409.76	1228.84

WATER BALLAST TKS (SG = 1.025)			
LOCATION	VOLUME (M3)	WEIGHT (Tonnes)	LCG (M)
NO.1 FW WB TK (C)	FR. 96 - F.E.	123.24	120.77
NO.2 WB TK (P)	FR. 82 - 96	169.34	165.95
NO.2 WB TK (S)	FR. 82 - 96	162.82	159.56
NO.3 WB TK (P)	FR. - 5 - 3	10.79	10.57
NO.3 WB TK (S)	FR. - 5 - 3	15.27	14.96
NO.4 WB TK (P)	A.E. - FR. - 5	18.93	18.55
NO.4 WB TK (S)	A.E. - FR. - 5	18.93	18.55
TOTAL	519.31	508.92	532.29

MISC. TKS	LOCATION	VOLUME (M3)	WEIGHT (Tonnes)	LCG (M)	TCG (M)	VCG (M)	FSM (-M)
FW HEADER TK (P) (SG=1.000)	FR. 47 - 48	4.34	4.25	28.500f	3.250p	10.250	3.38
DIRTY OIL TK (P) (SG= 0.870)	FR. 32 - 37	16.25	15.93	13.86	20.700f	1.975p	0.700
BLICE TK (S) (SG=1.025)	FR. 32 - 37	16.25	15.93	16.33	20.700f	1.975p	13.14
HYD OIL TK (P) (SG=0.924)	FR. 52 - 54	6.92	6.78	31.800f	7.372p	1.761	0.53
HYD OIL TK (S) (SG=0.924)	FR. 43 - 44	3.81	3.73	3.45	26.100f	0.000	2.11
ME LO TK (P) (SG=0.924)	FR. 52 - 54	7.27	7.13	6.59	31.800f	7.397p	0.53
ME LO TK (S) (SG=0.924)	FR. 52 - 54	7.27	7.13	6.59	31.800f	7.397p	0.53
FOAM TK (P) (SG=1.110)	FR. 54 - 56	9.81	9.61	10.67	33.000f	7.989p	0.63
DISPERSANT T (S) (SG=1.170)	FR. 24 - 30	10.94	10.72	12.54	16.200f	4.525p	1.28
SEWAGE TK (P) (SG=1.025)	FR. 66 - 69	6.75	6.62	6.78	40.498f	5.118p	3.13

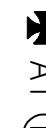

PACIFIC FALCON

CAPACITY PLAN



Swire Pacific Offshore

300 Beach Road, #12-01 The Concourse, Singapore - 199555
 E-mail: info@swire.com.sg Ph: +65 6309 3600

CLASS: ABS  A1  SEISMIC VESSEL.
 DPS-2

Scale: **1:150**
 Drawing No: **2765-G2-R1**
 Rev No: **0** Sheet **1 of 1**

ANTI HEEL TKS (SG = 1.025)	LOCATION		VOLUME (M3)		WEIGHT (Tonnes)		LCG (M)	TCG (M)	VCG (M)	FSM (-M)
	FR. 18 - 30	FR. 18 - 30	100%	98%	100%	98%				
ANTI HEEL TK (P)	FR. 18 - 30	96.80	94.86	14.573f	6.381p	3.717	6.42			
ANTI HEEL TK (S)	FR. 18 - 30	96.80	94.86	14.573f	6.381s	3.717	6.42			
TOTAL		193.60	189.73	196.40			12.84			

0	13-08-09	PV	REVISED AFTER SPONSOR INST	CMW	PV	14-08-09
0		Drawn		Chkd	Appr	

All information and data on this drawing are property of Swire Pacific Offshore.
 No part from that may be disclosed, copied, duplicated or in any other way made use of
 without written consent or used other than on terms agreed in writing.