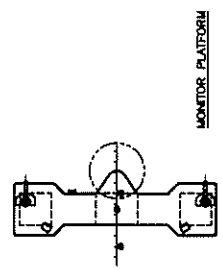
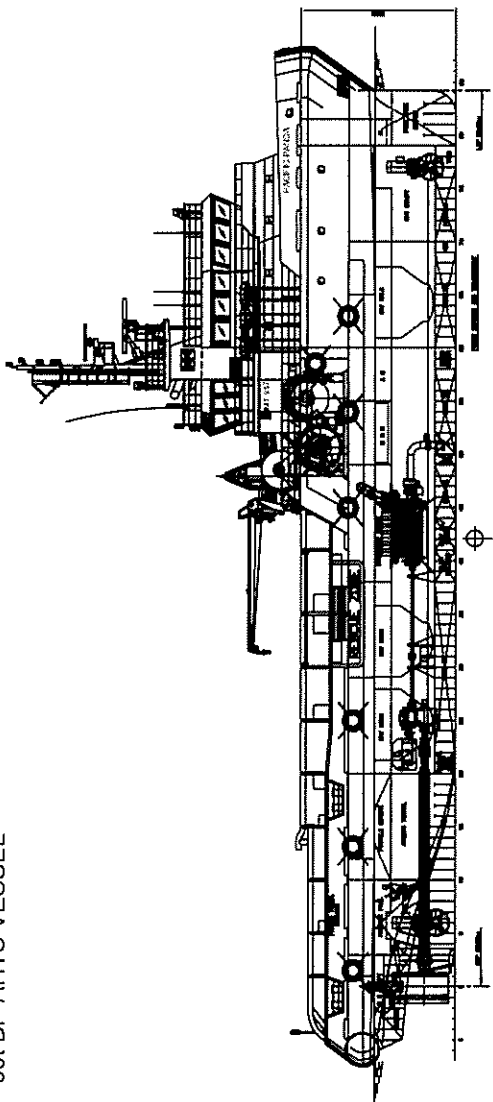
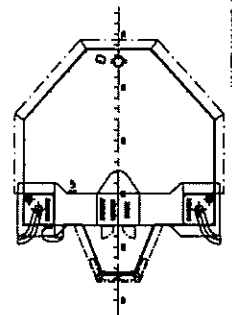


IMT957 - 60t BP AHTS VESSEL

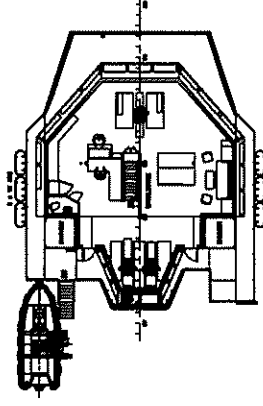
SWIRE PACIFIC OFFSHORE



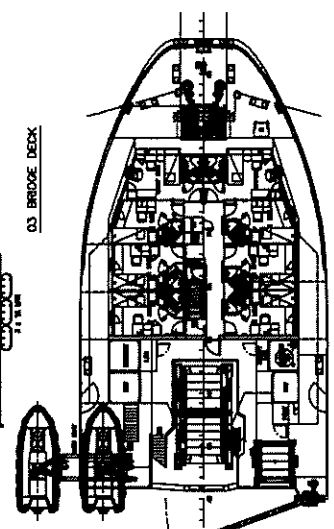
MONITOR PLATFORM



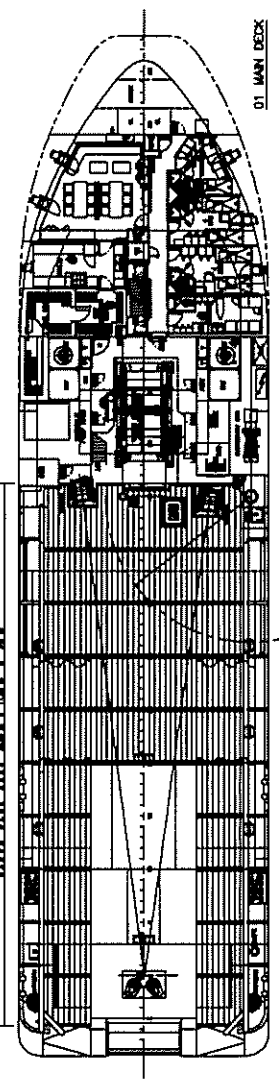
WHEELHOUSE TOP



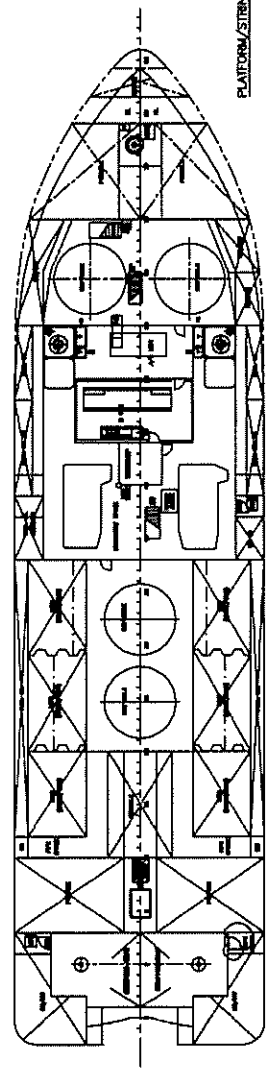
03 BRIDGE DECK



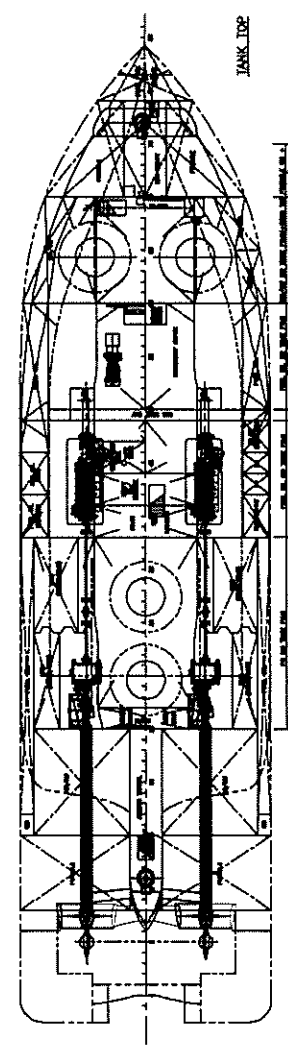
02 FOCLE DECK



01 MAIN DECK



PLATFORM/STRINGER DECK



TANK TOP

STATUS APPROVED WITH REVISIONS

NO.	DATE	DESCRIPTION	BY	CHKD.
1	1995.07.10	ISSUE DRAWING
2	1995.07.10
3	1995.07.10
4	1995.07.10
5	1995.07.10
6	1995.07.10
7	1995.07.10
8	1995.07.10
9	1995.07.10
10	1995.07.10

GENERAL DIMENSIONS:
 LENGTH O.A. 67.00m
 LENGTH B.P. 62.00m
 BREADTH M.D. 14.00m
 DEPTH M.D. (MAIN DECK) 4.00m
 DECK HEIGHT M.D. 4.00m
 MAXIMUM DRAUGHT M.D. (BRIDGE) 13.10m
 MAXIMUM DRAUGHT M.D. (MAIN DECK) 12.00m APPROX.
 CLASSIFICATION: ABS + AT, TOWING VESSEL + AHS, E + OFFSHORE SUPPORT VESSEL.