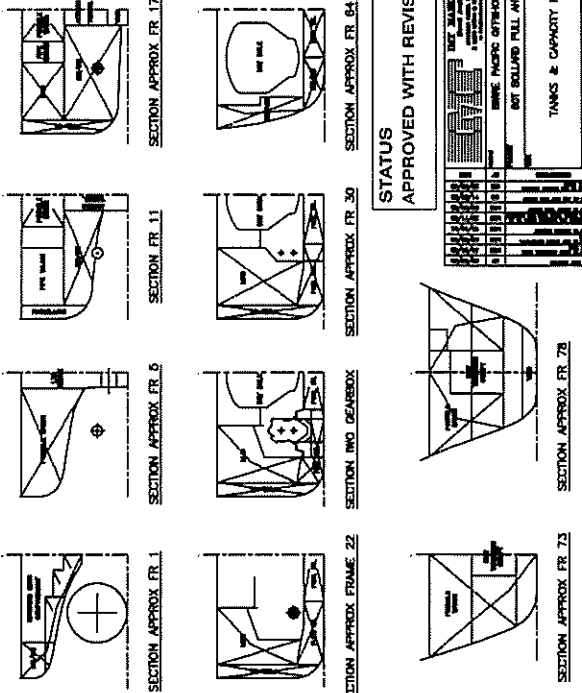
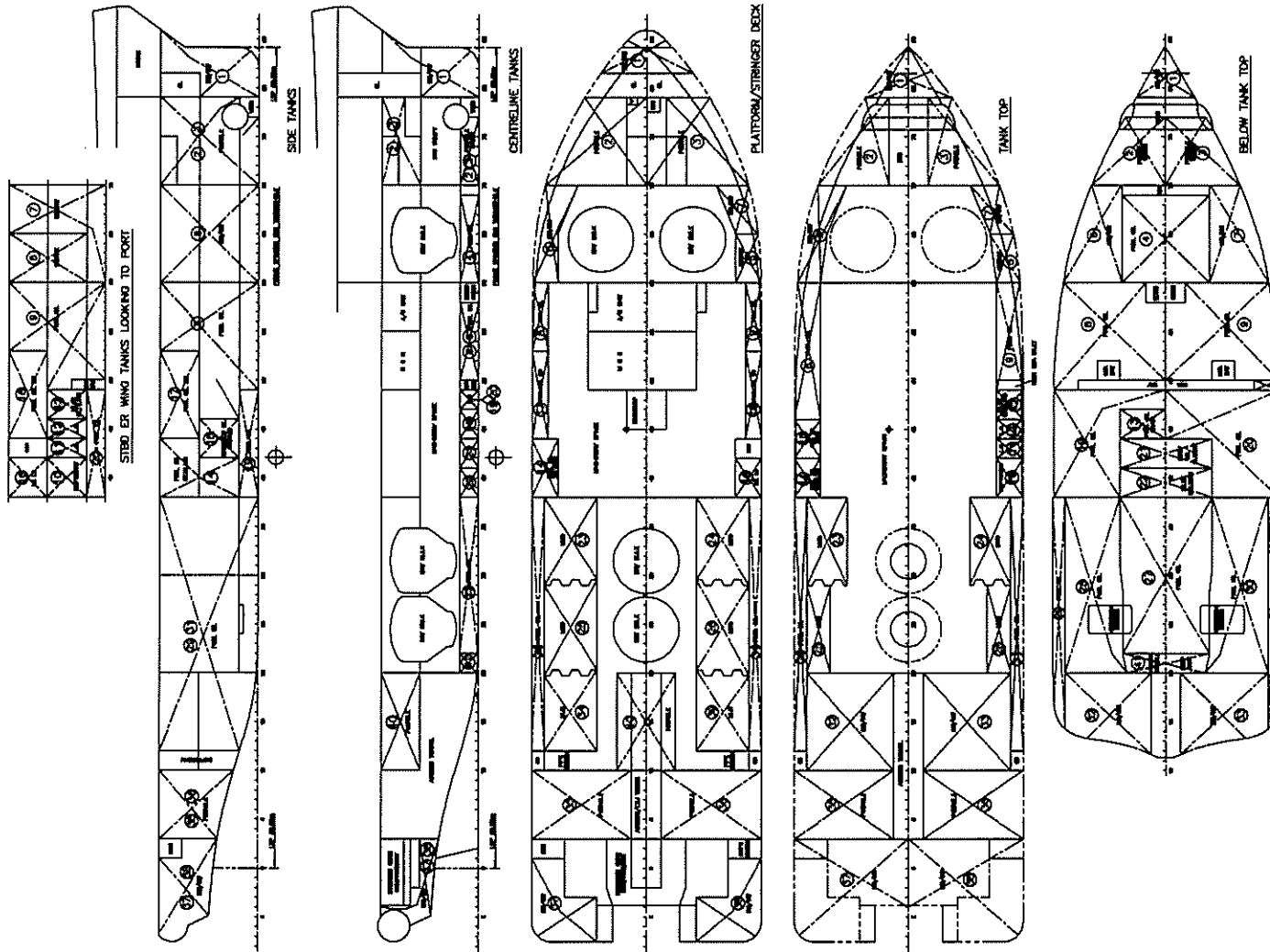


Tank No.	Tank Description	Capacity Fuel/Oil	Peak/Water	Mus.	ICG (m)	ICG (m)	
01	Starboard Wing Tank Port	13 643	55 438		18.85	18.85	
02	Starboard Wing Tank Starboard	13 643	55 438		18.85	18.85	
03	Port Wing Tank Starboard	13 643	55 438		18.85	18.85	
04	Port Wing Tank Port	13 643	55 438		18.85	18.85	
05	Water Ballast Wing Tank Port		55 438		18.85	18.85	
06	Water Ballast Wing Tank Starboard		55 438		18.85	18.85	
07	Fuel Oil Double Bottom Port	14 539	56 427		19.44	19.44	
08	Fuel Oil Double Bottom Starboard	14 539	56 427		19.44	19.44	
09	Deck Loading Tank Port	4 525			24.85	24.85	
10	Deck Loading Tank Starboard	4 525			24.85	24.85	
11	Fuel Oil Double Bottom Port	14 539	56 427		19.44	19.44	
12	Fuel Oil Double Bottom Starboard	14 539	56 427		19.44	19.44	
13	Deck Loading Tank Port	4 525			24.85	24.85	
14	Deck Loading Tank Starboard	4 525			24.85	24.85	
15	Water Ballast Wing Tank Port		55 438		18.85	18.85	
16	Water Ballast Wing Tank Starboard		55 438		18.85	18.85	
17	Fuel Oil Double Bottom Port	14 539	56 427		19.44	19.44	
18	Fuel Oil Double Bottom Starboard	14 539	56 427		19.44	19.44	
19	Deck Loading Tank Port	4 525			24.85	24.85	
20	Deck Loading Tank Starboard	4 525			24.85	24.85	
21	Water Ballast Wing Tank Port		55 438		18.85	18.85	
22	Water Ballast Wing Tank Starboard		55 438		18.85	18.85	
23	Mud Tank Port	21 832			28.88	28.88	
24	Mud Tank Starboard	21 832			28.88	28.88	
25	Mud Tank Port	21 832			28.88	28.88	
26	Mud Tank Starboard	21 832			28.88	28.88	
27	Fuel Oil Double Bottom Port	14 539	56 427		19.44	19.44	
28	Fuel Oil Double Bottom Starboard	14 539	56 427		19.44	19.44	
29	Fuel Oil Wing Tank Port	14 539	56 427		19.44	19.44	
30	Fuel Oil Wing Tank Starboard	14 539	56 427		19.44	19.44	
31	Fuel Oil Wing Tank Port	14 539	56 427		19.44	19.44	
32	Fuel Oil Wing Tank Starboard	14 539	56 427		19.44	19.44	
33	Water Ballast Wing Tank Port		55 438		18.85	18.85	
34	Water Ballast Wing Tank Starboard		55 438		18.85	18.85	
35	Platform Water Tank Port	2 669			20.00	20.00	
36	Platform Water Tank Starboard	2 669			20.00	20.00	
37	Platform Water Tank Port	2 669			20.00	20.00	
38	Platform Water Tank Starboard	2 669			20.00	20.00	
39	Mud Tank Port	21 832			28.88	28.88	
40	Mud Tank Starboard	21 832			28.88	28.88	
41	Fuel Oil Double Bottom Port	14 539	56 427		19.44	19.44	
42	Fuel Oil Double Bottom Starboard	14 539	56 427		19.44	19.44	
43	Deck Loading Tank Port	4 525			24.85	24.85	
44	Deck Loading Tank Starboard	4 525			24.85	24.85	
TOTAL					60 748	311 936	21 482
TOTAL CAPACITY					60 748	311 936	21 482

FOUR DRY BULK CARGO TANKS TOTALLING 140 CUBIC METRES



STATUS APPROVED WITH REVISIONS

Rev	By	Date	Description
1			INITIAL DESIGN
2			REVISIONS
3			REVISIONS
4			REVISIONS
5			REVISIONS

SECTION APPROX FR 73

SECTION APPROX FR 78

SECTION APPROX FR 30

SECTION APPROX FR 54

SECTION APPROX FR 17

SECTION APPROX FR 11

SECTION APPROX FR 5

SECTION APPROX FR 1

SECTION APPROX FR 22

SECTION INNO DECKBOX

TANKS & CAPACITY PLAN

DECK PLAN

WING OFFSHORE

WING FULL AFT

1100 (N40)